

CONCEPT

HIGH LEVEL EXCURSION TO GONDWANALAND GEOPARK

9 – 12 MAY 2022

BACKGROUND

In 2010, the Geopark Project was accepted for inclusion into the Joint Program on Sustainable Cultural Tourism in Namibia of the Millennium Development Goals Achievement Fund (MDGF), and 4 activities were undertaken in preparation for a future proclamation, namely the compilation of guidelines for the management of the Geopark; the design of corporate identity and texts for information boards for the geopark and production of promotional material; the design of training materials for future tour guides; and the architectural design for an information centre and provision of infrastructure for selling of minerals by small scale miners.

Before a Geopark can join UNESCO Global Geoparks, it needs to be proclaimed as a National Geopark. It is therefore envisaged to proclaim the Geopark under Sections 20 and 21 of the Wildlife and Protected Areas Management Bill, once promulgated. However, the project has been delayed, as the relevant legislation is still not in place. It is, nevertheless expected that the Bill, after many revisions, is enacted in the not-too-distant future, and therefore it is considered to be appropriate to be well prepared for applying for a proclamation under the said Bill once it becomes an Act.

In preparation for the above application and subsequent proclamation processes, the GIZ-Biodiversity Economy Project jointly with UNESCO in support of the Ministry of Mines and Energy and Ministry of Environment, Forestry and Tourism planned a “high-level excursion trip” into the intended Gondwanaland Geopark area. The trip intends to expose the high-level officials from the Natural Resources Standing Committee of parliament and the national council, politicians, senior management officials, Erongo



Supported by
giz Deutsche Gesellschaft
für Internationale
Zusammenarbeit (GIZ) GmbH



and Kunene Regional Governors and the Geopark Interim Taskforce members to the Gondwanaland Geopark area.

OBJECTIVE

The objective of the high-level excursion to the Gondwanaland Geopark area is three-fold to:

1. Equip the participants with adequate knowledge about the value of the geopark including its cultural, environmental, geological, heritage.
2. Enable the participants to better understand the different features of the Gondwanaland Geopark area.
3. Enable the participants to engage with and better understand the needs of the stakeholders (Conservancies, Traditional Authorities, Tourism Operators, Small-Scale Miners, other players) on the landscape management and conservation.
4. Enable the participants to become ambassadors of the Geopark initiative.

DESCRIPTION

The excursion is planned to take place between the 9th – 12th May 2022 where various activities in line with understanding the Geopark features, stakeholder consultations, and other related players of the Geopark will be undertaken. Activities will include visits to the following sites:

- Spitzkoppe – includes conservancies (#Gaingu), geological mountains, heritage sites (rock paintings Bushman paradise), Tourism Lodge, Traditional Authorities and Small-Scale Miners.
- Brandberg – includes the Messum Crater, conservancy, elephant tracking, the white lady, elephant rock campsite, aquaculture farm, Xobo xobo mountains etc.
- Twyfelfontein – includes Twyfelfontein community joint venture lodge, rock paintings, petrified forests, Damara Living Museum, Organ pipes etc.



Supported by
giz Deutsche Gesellschaft für Internationale Zusammenarbeit (GIZ) GmbH



ACCOMMODATION

Accommodation will be at different lodges as will be prescribed in the itinerary. Costs related to this will be covered by GIZ Biodiversity Economy Project.

TRANSPORT

A tour operator will be appointed to guide the delegation into and back from the landscape. The suitable vehicles for the trip are 4x4 as roads are most rocky gravel to sandy.

NB: The GIZ Biodiversity Project may cover km costs for non-government vehicles using the prescribed daily rates for travel on gravel and on tar as per prescribed GIZ Travel Policies.

MEALS

Breakfast, lunch and dinner will be provided.

CLOTHING

Please pack comfortable clothing and shoes for walking and hiking, and warm clothes for the evening and morning as it can become very cold.

Field hats and water bottles will be provided.

CONTACTS

For more information, please contact:

- Ms Josephine Uushona, Ministry of Mines and Energy: Josephine.Uushona@mme.gov.na.
- Ms Nashilongo Amutenya, UNESCO: rn.amutenya@unesco.org.
- Mr Rector Mbeha, GIZ Namibia (Deutsche Gesellschaft für Internationale Zusammenarbeit): rector.mbeha@giz.de.
- Ms Kombada Mhopjeni, Ministry of Mines and Energy & UNESCO: Kombada.Mhopjeni@mme.gov.na / k.mhopjeni@unesco.org .



Supported by
giz Deutsche Gesellschaft für Internationale Zusammenarbeit (GIZ) GmbH



SCHEDULE

DATE	ACTIVITY	TIME	WHERE
MONDAY 09.05.22	Welcome Remarks - Hon. Kornelia Shilunga, Deputy Minister, Ministry of Mines and Energy Excursion logistics - Mr Rector Mbeha, GIZ Namibia	08:00-08:30	Auditorium - Ministry of Mines and Energy
	Departure from Windhoek	08:30	Ministry of Mines and Energy
	Introduction to Small Scale Market - Dr Gabi Schneider, Namibian Uranium Institute Tour of Spitzkoppe of Small Scale Miners Market	11:30 – 12:30	The crossing – Small Scale Miners Market
	LUNCH (Spitzkoppe Lodge)		
	Meeting with Joint Venture Partners and Conservancy Chairperson and Traditional Authorities – Mr Nicky //Gaseb, Dâure Daman Traditional Authority & Mr Rector Mbeha, GIZ Namibia	14:00 – 15:00	Spitzkoppe lodge
	Tour of Spitzkoppe - visit Bushman and Snake paintings, mountain climbing, Granite Bridge, etc.	15:30 -17:30	Spitzkoppe
	Reflection of the Day - Hon. Kornelia Shilunga, Deputy Minister, Ministry of Mines and Energy Overview of the Gondwanaland Geopark - Dr Gabi Schneider, Namibian Uranium Institute	17:30 – 18:00	Spitzkoppe Lodge Outdoor Restaurant
	Check in	18:00	



Supported by
giz Deutsche Gesellschaft
für Internationale
Zusammenarbeit (GIZ) GmbH



	DINNER	19:00	Spitzkoppe Lodge (and various places)
TUESDAY 10.05.22	BREAKFAST	06:00-07:45	
	Departure to Brandberg	08:00	Spitzkoppe
	White lady – paintings	10:30 – 13:00	Brandberg
	LUNCH (Packed lunch)		
	Tour of the – <ul style="list-style-type: none"> • Aquaculture plant • Uis Tin Mine 	14:30 - 17:00	Uis
	Reflection of the Day - Hon. Heather Sibungo, Deputy Minister, Ministry of Environment, Tourism and Forestry The value of Culture – Mr Boyson Ngondo, Ministry of Education, Arts and Culture	18:00 – 18:30	Brandberg White Lady Lodge
	DINNER – BRAAI (Brandberg White Lady Lodge)		
WEDNESDAY 11.05.22	BREAKFAST	06:00-07:45	
	Departure to Twyfelfontein	08:00	Brandberg White lady Lodge
	Petrified Forest	10:00 – 11:00	Khorixas
	Damara Living Museum	12:00 – 13:00	Twyfelfontein
	LUNCH (Twyfelfontein Lodge)		
	Meeting with Uibasen Conservancy & Tourism Joint Venture Management	14:30 – 15:30	Twyfelfontein Lodge
	Rock Engravings, Burned Mountain and Organ pipes	15:30-17:30	Twyfelfontein



Supported by
giz Deutsche Gesellschaft
für Internationale
Zusammenarbeit (GIZ) GmbH



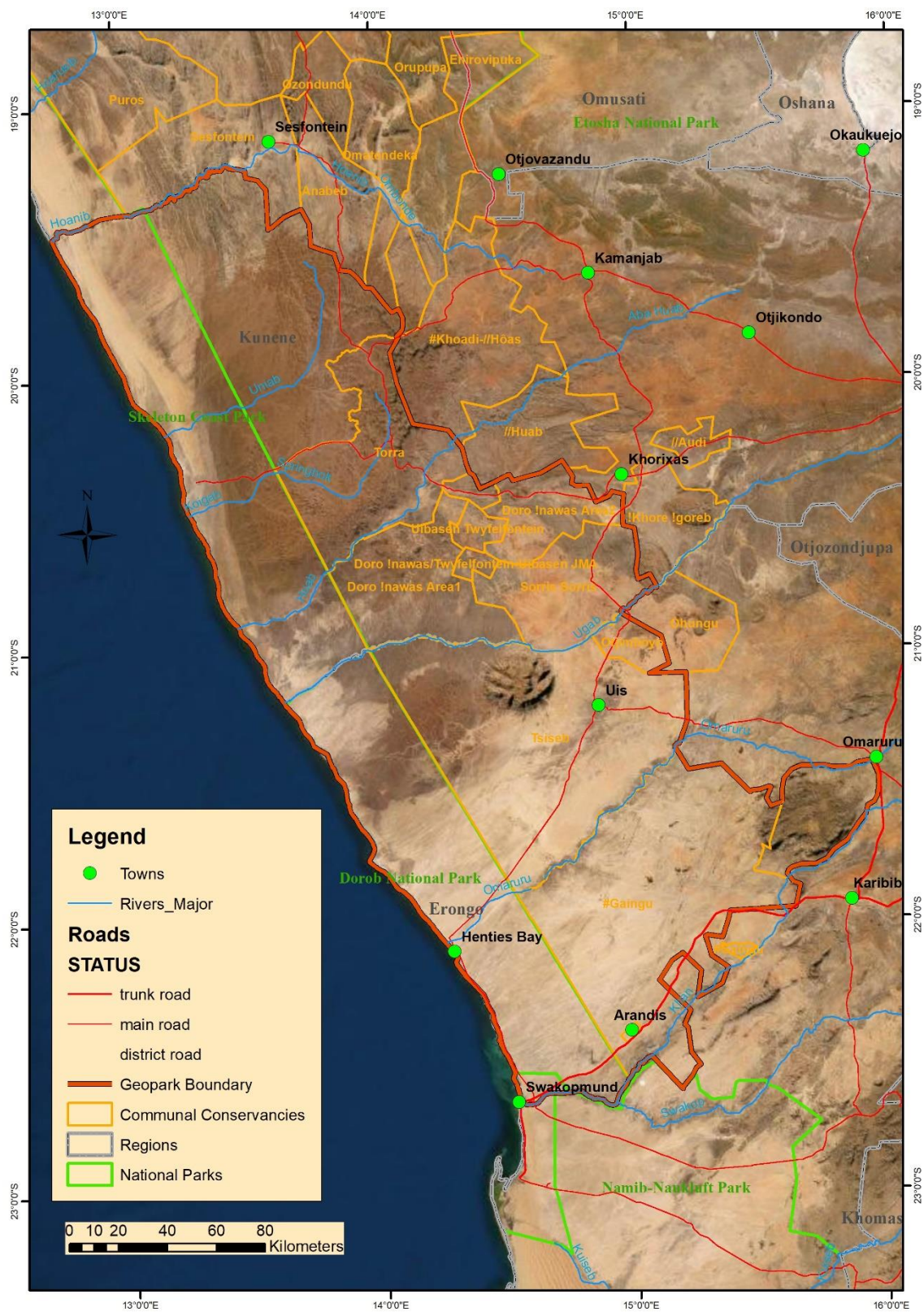
	Reflection of the Day – Hon. Marius Sheya, Kunene Region Governor Remarks - Mr Djaffar Moussa-Elkadhum, UNESCO Remarks - Mr Rector Mbeha, GIZ Namibia	18:00 – 18:30	Twyfelfontein Lodge
	DINNER (Twyfelfontein Lodge)		
THURSDAY 12.05.22	BREAKFAST	06:00 - 07:00	
	Rhino Tracking	07:00 – 12:00	Twyfelfontein
	Reflection of the Day - Hon. Heather Sibungo, Deputy Minister, Ministry of Environment, Tourism and Forestry Closing Remarks - Dr Vickey Do Cabo, Ministry of Mines and Energy Vote of Thanks - Fr Roderick April, Namibia National Commission for UNESCO	12:30 – 13:00	
	LUNCH (Twyfelfontein Lodge)		
	Departure to Windhoek	14:30	Twyfelfontein Lodge



Supported by
giz Deutsche Gesellschaft
für Internationale
Zusammenarbeit (GIZ) GmbH

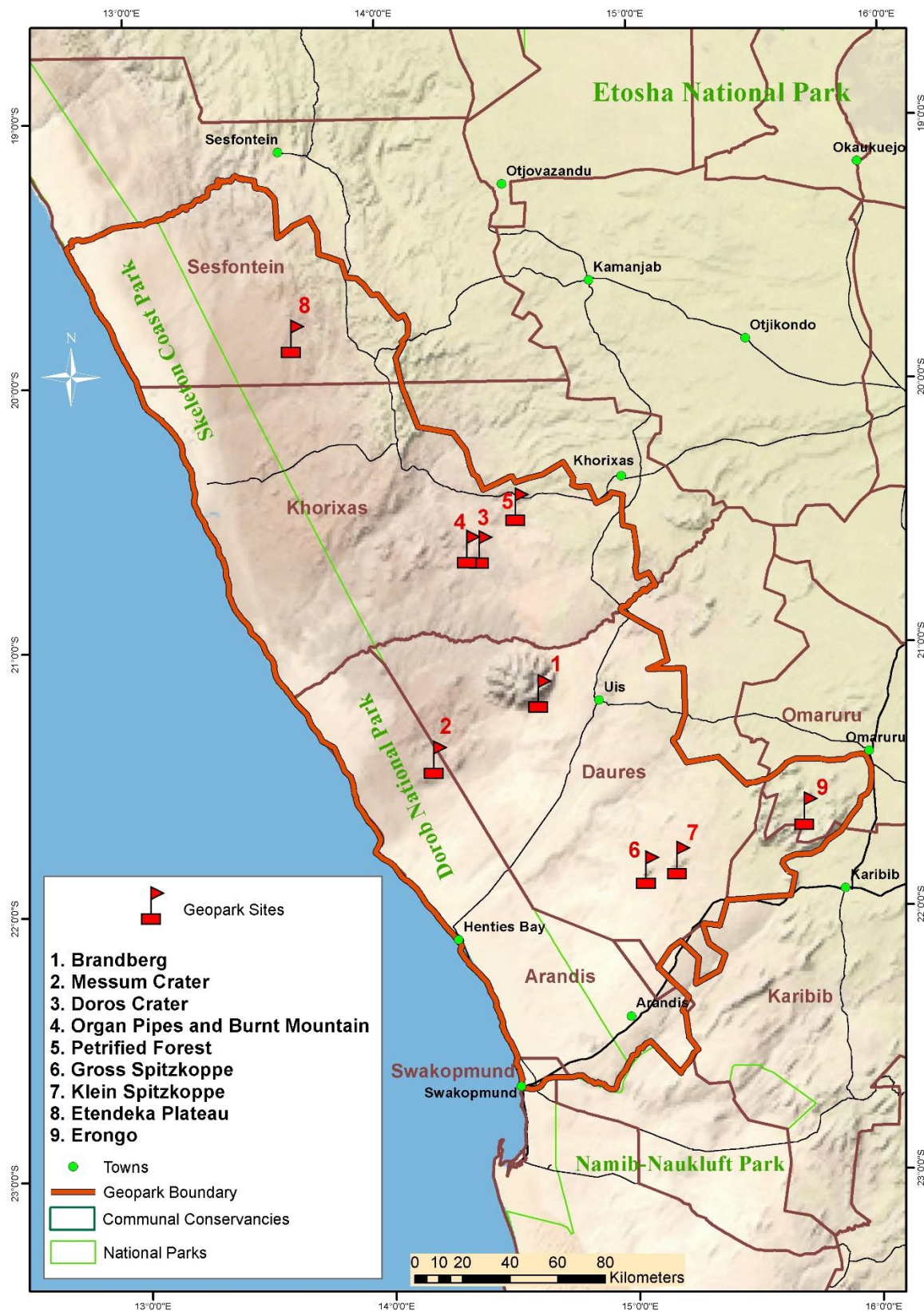


Maps of the Geopark area



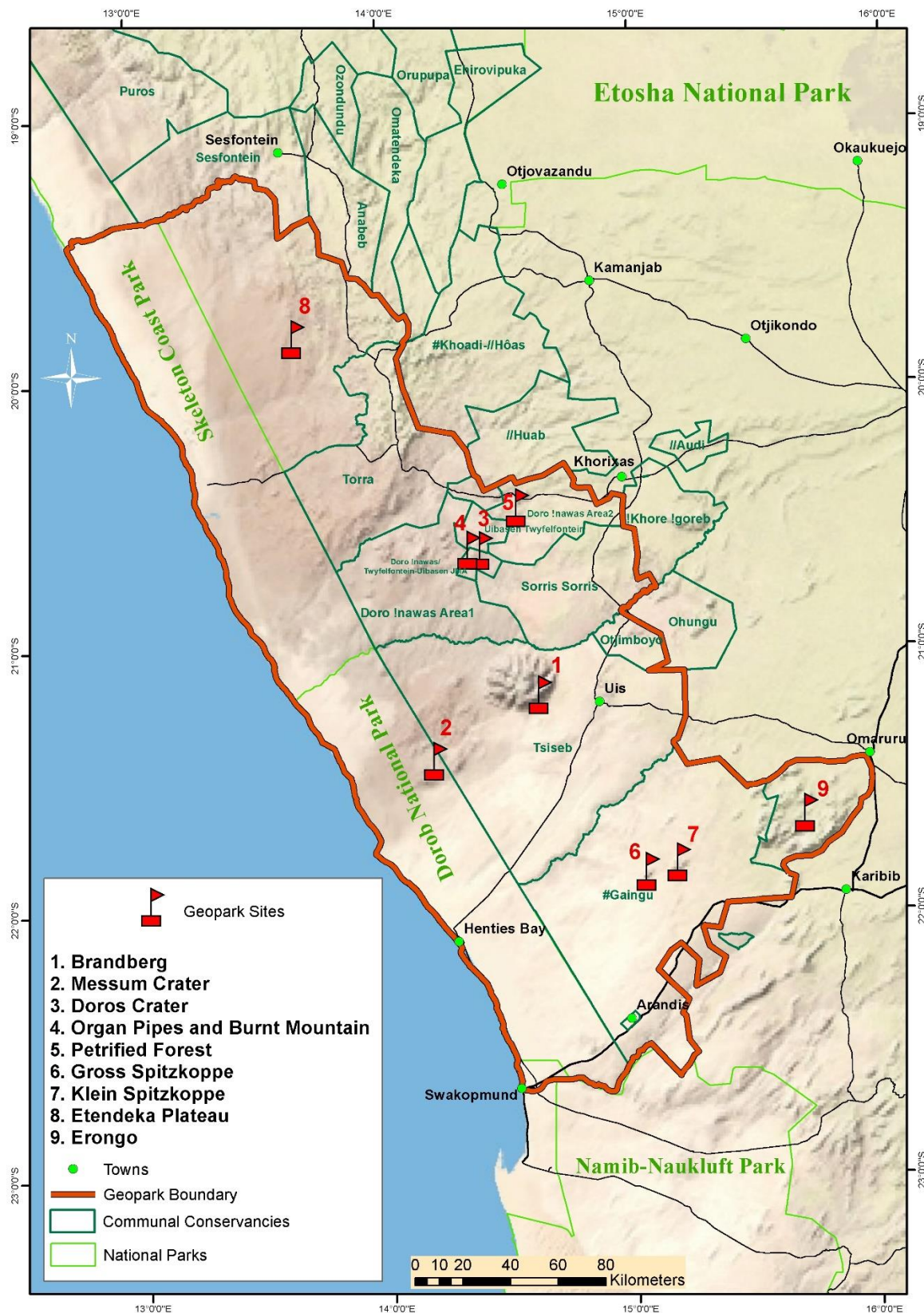
Supported by
giz Deutsche Gesellschaft für Internationale Zusammenarbeit (GIZ) GmbH





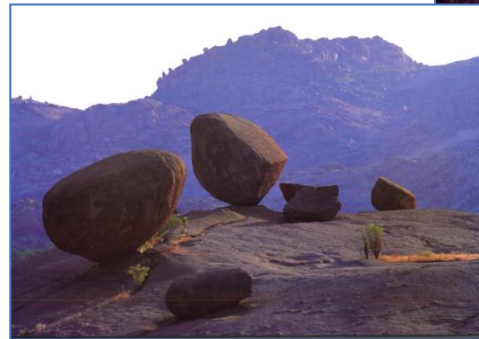
Supported by
giz
Deutsche Gesellschaft für Internationale Zusammenarbeit (GIZ) GmbH





Supported by
giz
Deutsche Gesellschaft für Internationale Zusammenarbeit (GIZ) GmbH





Geological Attractions



List of Invited Participants

No.	Name	Designation	Institution
1	Hon. Kornelia Shilunga	Deputy Minister of Mines and Energy	Ministry of Mines and Energy
2	Dr Vickey Do Cabo	Director of Mapping and Geo-Information	Ministry of Mines and Energy
3	Ms Josephine Uushona	Senior Geoscientist	Ministry of Mines and Energy
4	Vatilifa Stephanus	Diver for Hon. Kornelia Shilunga	Ministry of Mines and Energy
5	Nakale Ndapunikwakomwene	Bodyguard for Hon. Kornelia Shilunga	Ministry of Mines and Energy
6	Ms Kombada Mhopjeni	Deputy Director – Geo-Information & National Program Officer - Sciences	Ministry of Mines and Energy & UNESCO
7	Hon. Heather Sibungo	Deputy Minister of Environment, Tourism and Forestry	Ministry of Environment, Tourism and Forestry
8	Mr Norman Ndeuyeeka	PA for Hon. Heather Sibungo	Ministry of Environment, Tourism and Forestry
9	Ms.Kazungo Angelika	Bodyguard for Hon. Heather Sibungo	Ministry of Environment, Tourism and Forestry
10	Mr Libonga Jansen	Driver for Hon. Heather Sibungo	Ministry of Environment, Tourism and Forestry
11	Mr. Gerard Vries	Deputy Executive Director	Ministry of Education, Arts and Culture
12	Lukas Nangolo	Driver for Gerard Vries	Ministry of Education, Arts and Culture
13	Kaarina Efraim	Archaeologist Curator	Ministry of Education Arts and Culture
14	Mr Boyson Ngondo	Deputy Director – Heritage and Culture Programme	Ministry of Education, Arts and Culture
15	Hon. Kletus Karondo	Members National Assembly's Parliamentary Committee on Natural Resources	National Assembly's Parliamentary Committee on Natural Resources



Supported by
giz Deutsche Gesellschaft
 für Internationale
 Zusammenarbeit (GIZ) GmbH



16	Hon. Paula Kooper	Members National Assembly's Parliamentary Committee on Natural Resources	National Assembly's Parliamentary Committee on Natural Resources
17	Hon. Maria Elago	Members National Assembly's Parliamentary Committee on Natural Resources	National Assembly's Parliamentary Committee on Natural Resources
18	Mr. Albius Mutonga	Staff National Assembly's Parliamentary Committee on Natural Resources	National Assembly's Parliamentary Committee on Natural Resources
19	Hon. Marius Sheya	Kunene Governor	Kunene Regional Council
20	Tiree Awises	PA of Hon. Marius Sheya	Kunene Regional Council
21	Mr.Theodor Kazombiaze	Chief Administrative Officer of Hon. Marius Sheya	Kunene Regional Council
22	Hikuru Tjazapi	Volunteer of Hon. Marius Sheya	Kunene Regional Council
23	Romanus Goraseb	Driver of Hon. Marius Sheya	Kunene Regional Council
24	Rufus Shihama	Photographer of Hon. Marius Sheya	Kunene Regional Council
25	Ms. Ludmilla Habate Doëses	Chief Regional Officer	Erongo Regional Council
26	Chief Zacharias Seibeb	Chief of Dauredaman Traditional	Dâure Daman Traditional Authority
27	Mr Nicky //Gaseb	Traditional Councillor	Dâure Daman Traditional Authority
28	Mr Isaac Goseb	Senior Traditional Councillor	!Oe- #Gân Traditional Authority
29	Mr Norman Kleophas Tsuseb	Traditional Councillor	#Aodaman Traditional Authority
30	Fr Rod April	Secretary-General	Namibia National Commission for UNESCO
31	Ms Agnes Shiningayamwe	Heritage Officer	National Heritage Council
32	Prof Ben Mapani	Professor- Mining Engineering	Namibia University of Science and Technology
33	Dr Gabi Schneider	Director	Namibian Uranium Institute
34	Dr Absai Vatuva	HoD: Department of Geo-Sciences	University of Namibia



Supported by
giz Deutsche Gesellschaft
für Internationale
Zusammenarbeit (GIZ) GmbH



35	Dr Martin Hipondoka	Associate Professor: Geomorphology, Remote Sensing, GIS	University of Namibia
36	Mr Rector Mbeha	Technical Advisor - Biodiversity Economy in Selected Landscapes in Namibia Project (Biodiversity Economy Project)	GIZ Namibia (Deutsche Gesellschaft für Internationale Zusammenarbeit)
37	Meta Lenga	Intern	GIZ Namibia (Deutsche Gesellschaft für Internationale Zusammenarbeit)
38	Djaffar Moussa-Elkadhum	UNESCO Representative to Namibia	UNESCO
39	Ms Helvi Elago	National Programme Officer - Culture	UNESCO
40	Ms Nashilongo Amutenya	Project Assistant	UNESCO
41	Mr Clemens Naomab	Senior Project Coordinator	Namibia Nature Foundation



Supported by
giz Deutsche Gesellschaft
für Internationale
Zusammenarbeit (GIZ) GmbH

